

Wireless Router with 4-Port EtherSwitch

Quick Installation Guide for Windows 95/98/ME/NT/2000/XP

M73-APO07-300

Step 1: Cabling

Step 2: Configuration via Web

Step 3: Checking the Internet Connection

STEP 1: CABLING

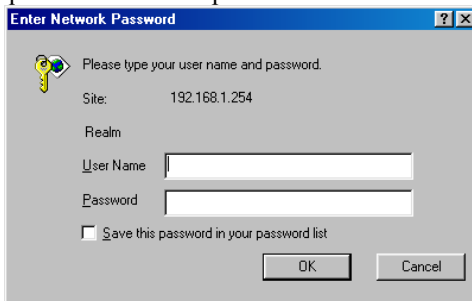
- Power down your PC, Cable or DSL modem and this Wireless Router.
- Connect the included power -supply cable adapter to the power pack marked as 5V DC.
- Connect your broadband modem (i.e. cable/DSL modem) to the Internet port on the rear of the Wireless Router.
- Connect a network cable from one of your PCs' Ethernet ports to one of the Local (1 to 4) ports on the rear of the Wireless Router.
- Both UTP Ethernet straight cable and cross-over cable are suitable for all WAN/LAN connections, press the MDI/MDIX button for your case.
- Power on this device.
- Make sure these three LEDs (Power, Internet, Local) lit.

STEP 2: CONFIGURATION VIA WEB

1. Open your PC's web browser and type **http://192.168.1.254** in the browser's Address box. Press **Enter**.



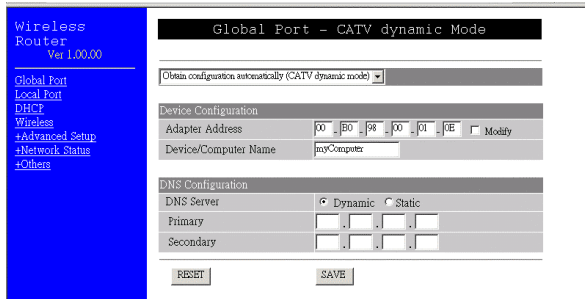
2. No user name is required. The default password is left blank. Click **OK** to continue.



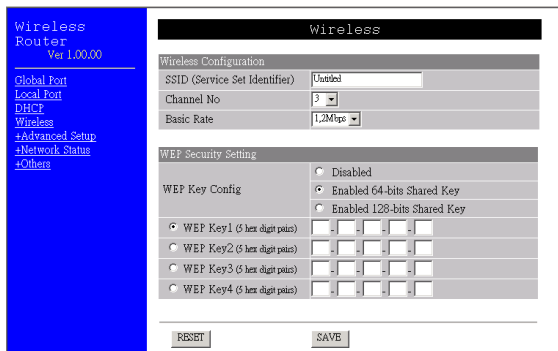
3. The opening screen contains settings for the Global (Internet connection) interface. Click on the **down arrow** ▼ to select the desired Internet connection mode on the list.

Obtain configuration automatically (CATV dynamic mode)	For users who are using Cable Modem Internet service.
PPPoE (DSL dynamic mode)	For users who are using xDSL Internet

	service that runs PPPoE. If your xDSL service uses PPPoE, after installing the Wireless router, do not run PPPoE software on your computers.
Static configuration	Select this item when the ISP assigns static IP address for your account.



4. When finished, click Wireless in the left pane for Wireless LAN settings.



Wireless Configuration

SSID	You have to assign an SSID for identification.
Channel No.	You have to select a Channel No as the Channel ID for identification too.
Basic Rate	Set to 1,2 Mbps by default.

STEP 3: CHECKING THE INTERNET CONNECTION

- To see if the IP Sharing device is visible on the local network, go to **Start → Run “PING 192.168.1.254”**
- To check if this IP Sharing device is connected to the Internet, run **“PING 168.95.192.1 – w 3000”**.
- Run a web browser to surf the Internet.